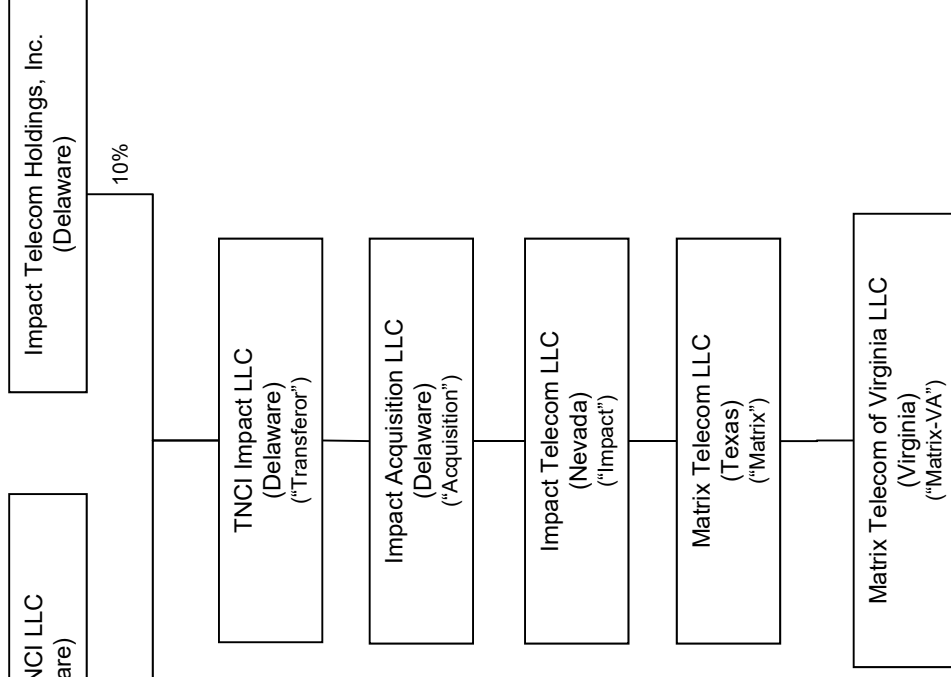


EXHIBIT A

Current, Post-Closing and Post-Transaction *Pro Forma* Change Entity Structures

Docket Nos. 18-2452-01 and 18-2563-02

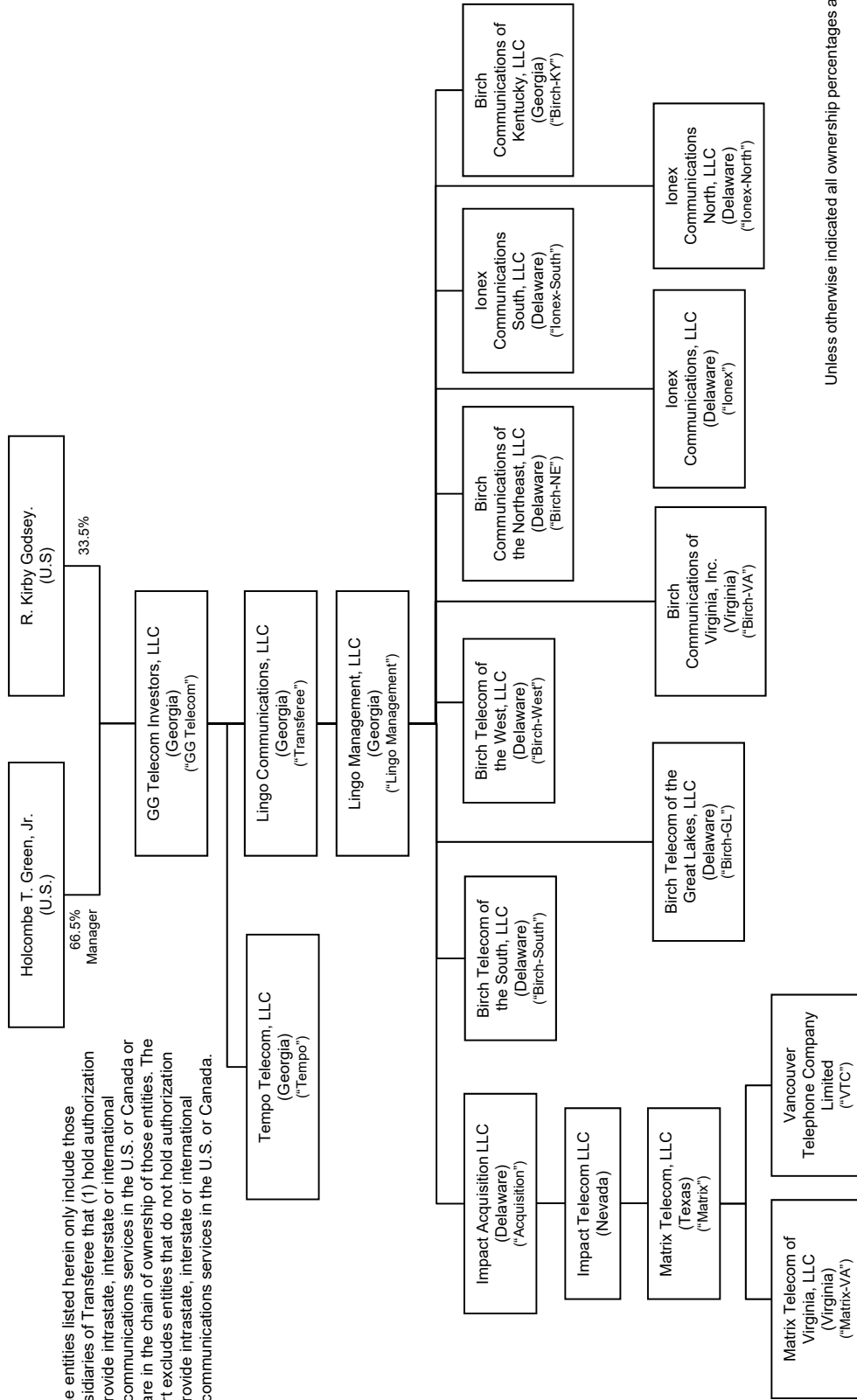
Current Organizational Structure of Matrix & Matrix-VA*



* The entities listed herein only include those subsidiaries of Transferor that (1) hold authorization to provide intrastate, interstate or international telecommunications services in the U.S. or Canada or (2) are in the chain of ownership of those entities. The chart excludes entities that do not hold authorization to provide intrastate, interstate or international telecommunications services in the U.S. or Canada.

Unless otherwise indicated all ownership percentages are 100%.

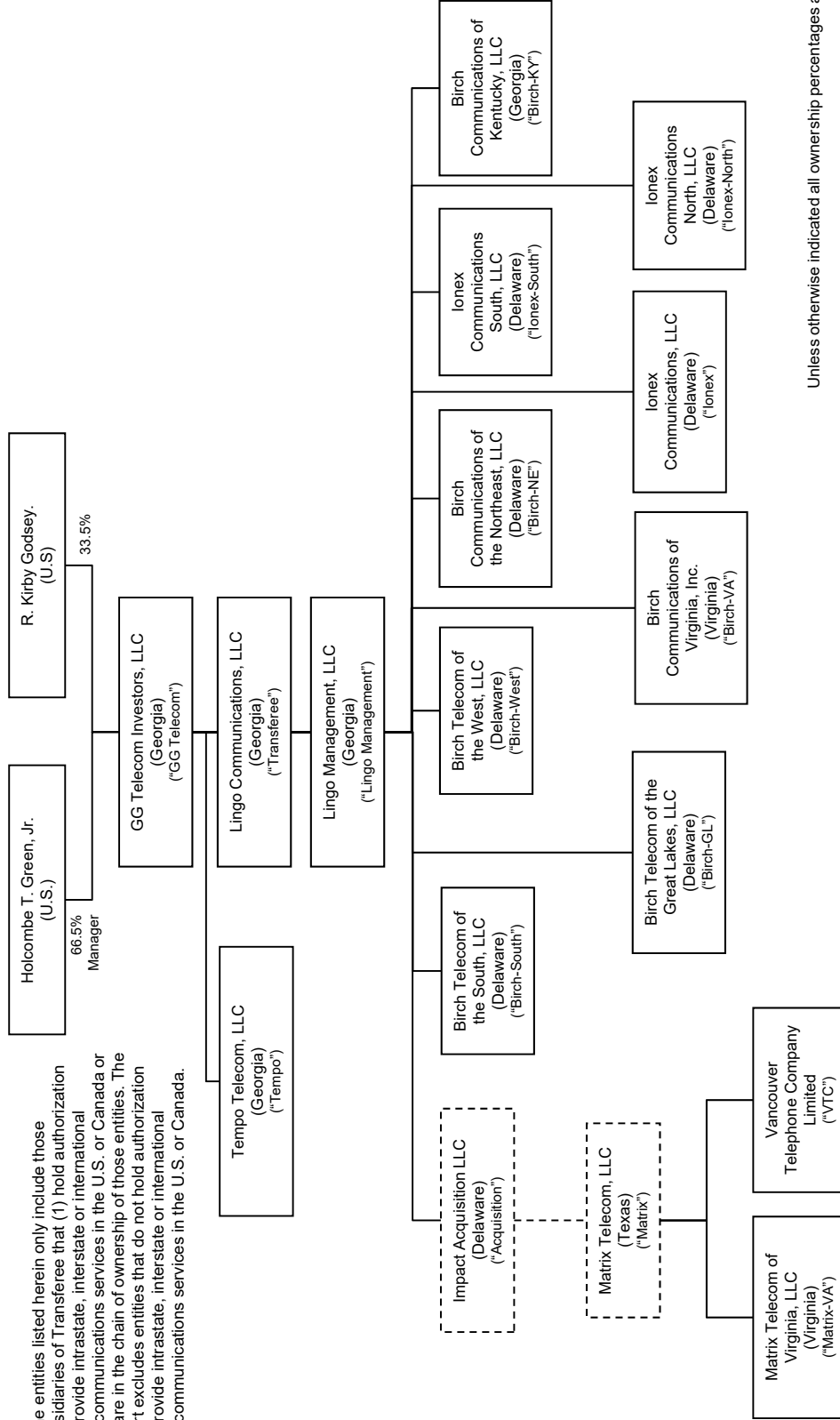
Post-Closing Organizational Structure of Matrix & Matrix-VA*



* The entities listed herein only include those subsidiaries of Transferee that (1) hold authorization to provide intrastate, interstate or international telecommunications services in the U.S. or Canada or (2) are in the chain of ownership of those entities. The chart excludes entities that do not hold authorization to provide intrastate, interstate or international telecommunications services in the U.S. or Canada.

Unless otherwise indicated all ownership percentages are 100%.

Organizational Structure of Matrix & Matrix-VA Post-Transaction Pro Forma Change*



* The entities listed herein only include those subsidiaries of Transferee that (1) hold authorization to provide intrastate, interstate or international telecommunications services in the U.S. or Canada or (2) are in the chain of ownership of those entities. The chart excludes entities that do not hold authorization to provide intrastate, interstate or international telecommunications services in the U.S. or Canada.

Unless otherwise indicated all ownership percentages are 100%.

Highlights Difference in Structure Resulting from Post-Transaction Pro Forma Change