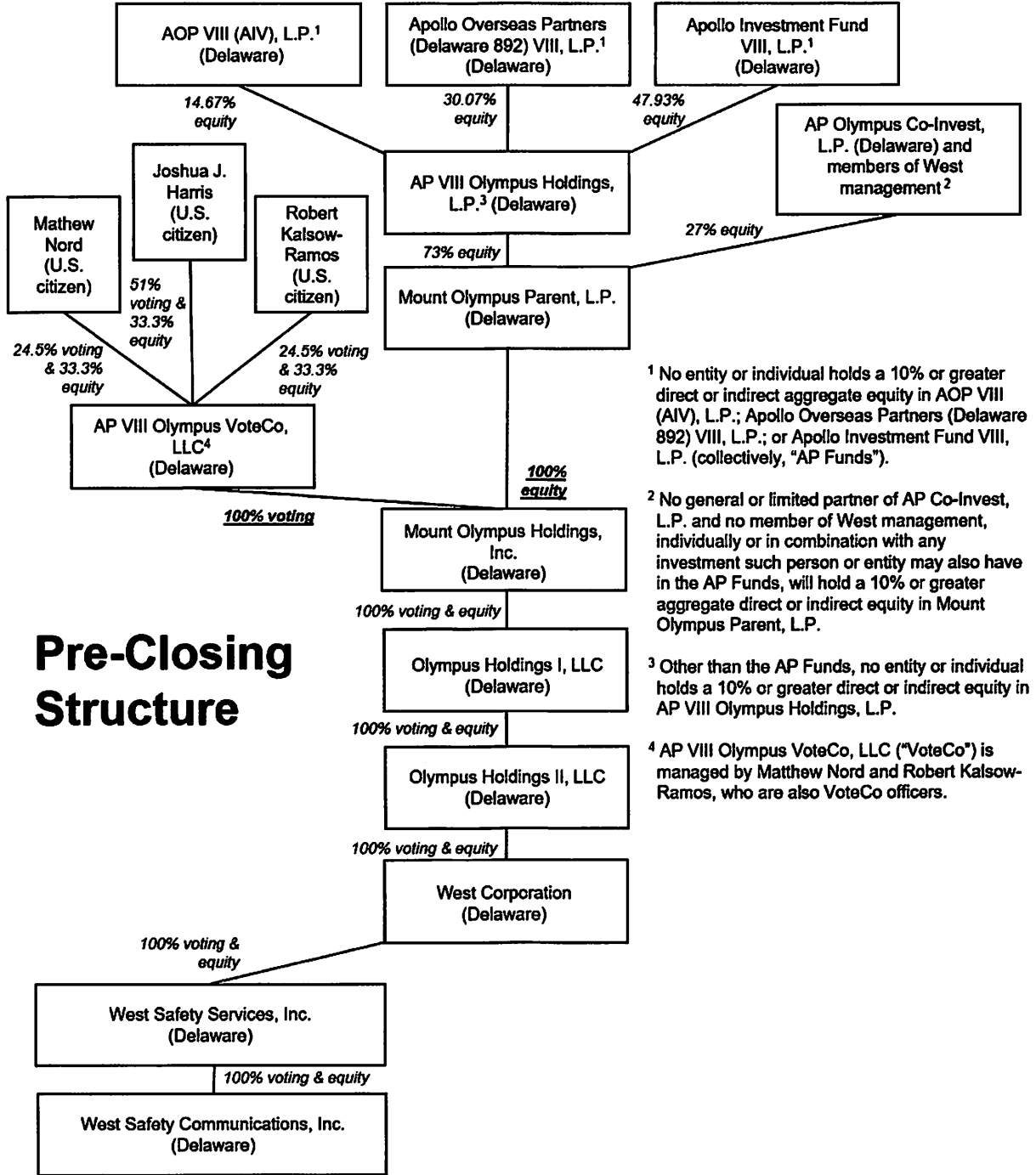


EXHIBIT A

Docket No. 19-2366-01

PRE- AND POST-CLOSING ORGANIZATIONAL DIAGRAMS

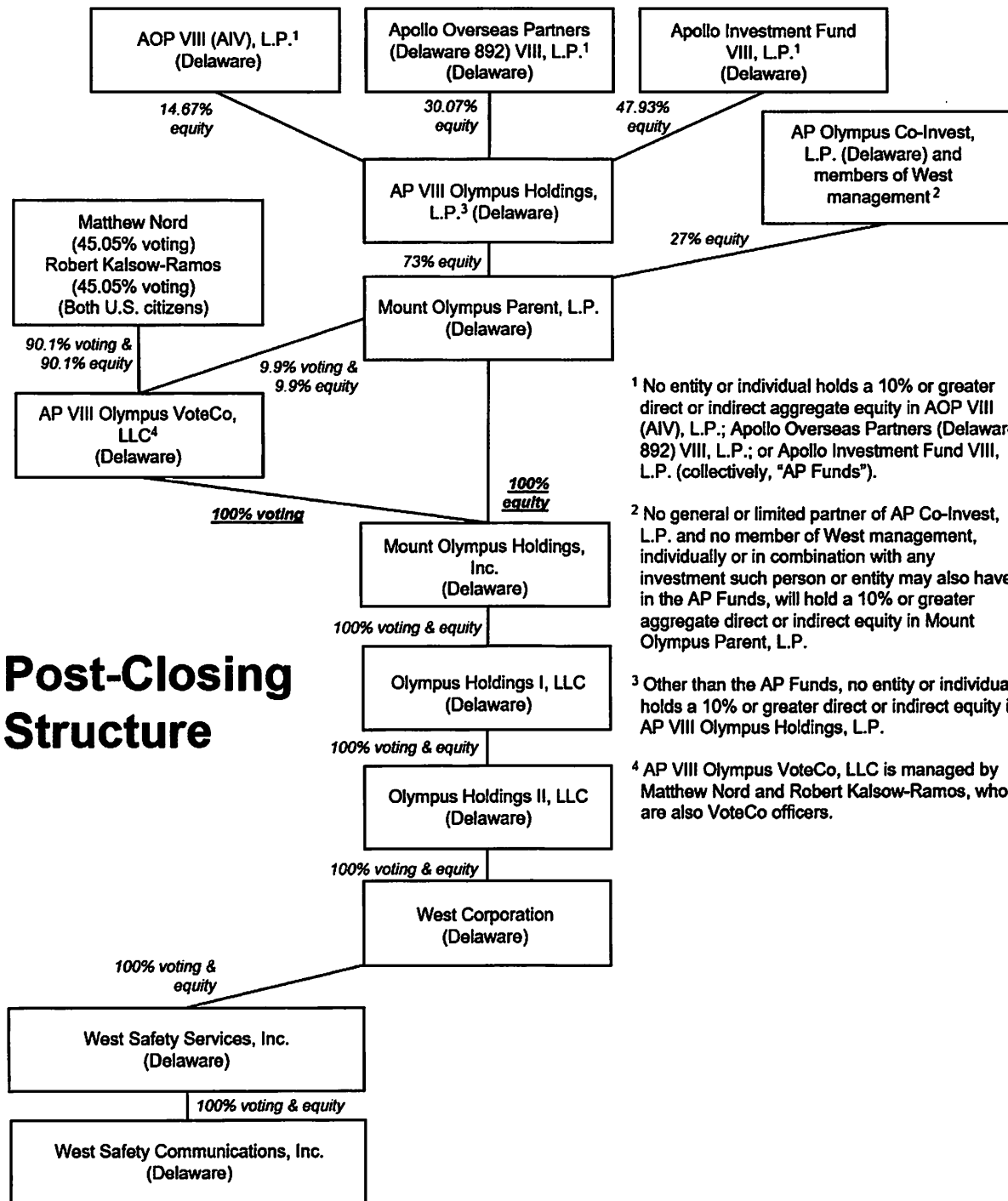


¹ No entity or individual holds a 10% or greater direct or indirect aggregate equity in AOP VIII (AIV), L.P.; Apollo Overseas Partners (Delaware 892) VIII, L.P.; or Apollo Investment Fund VIII, L.P. (collectively, "AP Funds").

² No general or limited partner of AP Co-Invest, L.P. and no member of West management, individually or in combination with any investment such person or entity may also have in the AP Funds, will hold a 10% or greater aggregate direct or indirect equity in Mount Olympus Parent, L.P.

³ Other than the AP Funds, no entity or individual holds a 10% or greater direct or indirect equity in AP VIII Olympus Holdings, L.P.

⁴ AP VIII Olympus VoteCo, LLC ("VoteCo") is managed by Mathew Nord and Robert Kalsow-Ramos, who are also VoteCo officers.



Post-Closing Structure

¹ No entity or individual holds a 10% or greater direct or indirect aggregate equity in AOP VIII (AIV), L.P.; Apollo Overseas Partners (Delaware 892) VIII, L.P.; or Apollo Investment Fund VIII, L.P. (collectively, "AP Funds").

² No general or limited partner of AP Co-Invest, L.P. and no member of West management, individually or in combination with any investment such person or entity may also have in the AP Funds, will hold a 10% or greater aggregate direct or indirect equity in Mount Olympus Parent, L.P.

³ Other than the AP Funds, no entity or individual holds a 10% or greater direct or indirect equity in AP VIII Olympus Holdings, L.P.

⁴ AP VIII Olympus VoteCo, LLC is managed by Matthew Nord and Robert Kalsow-Ramos, who are also VoteCo officers.