

EXHIBIT "E"



This map doesn't contain any items.

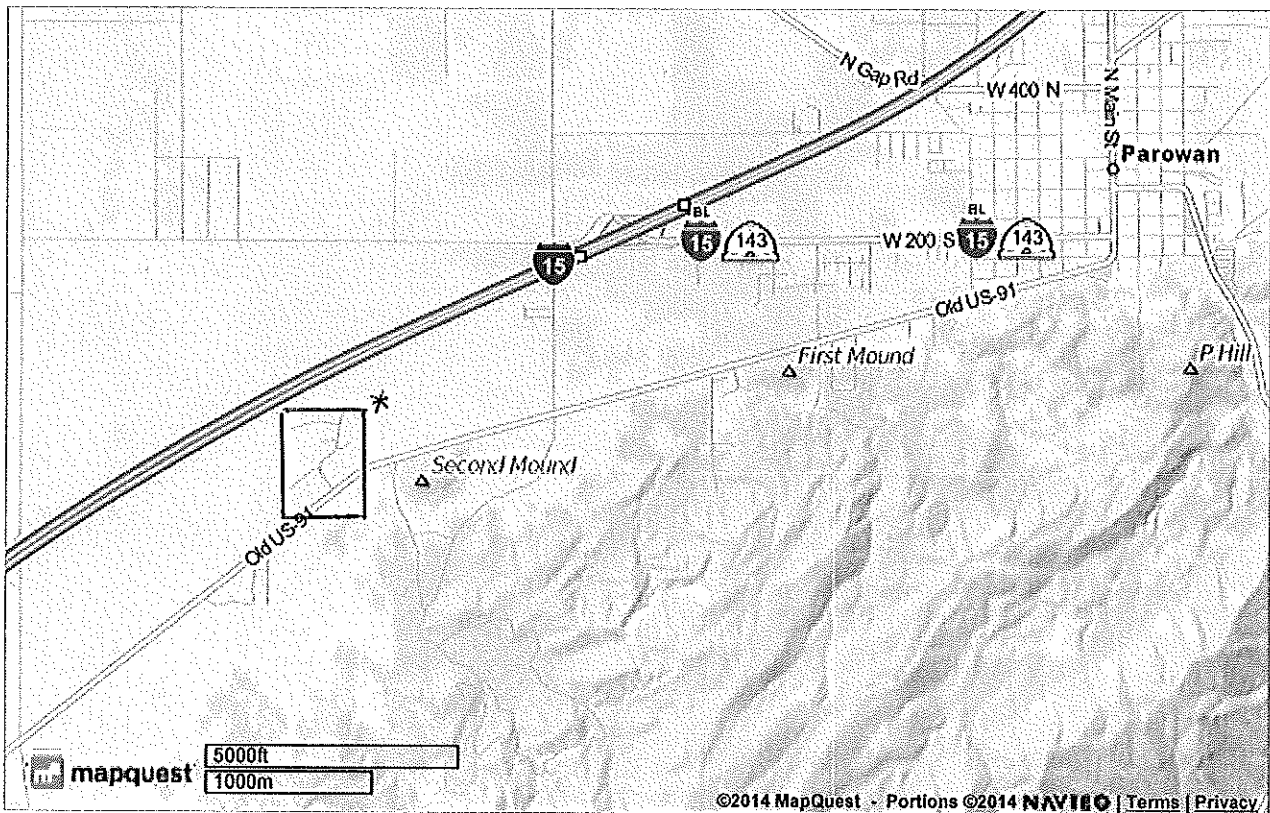
Notes

[Empty text box for notes]

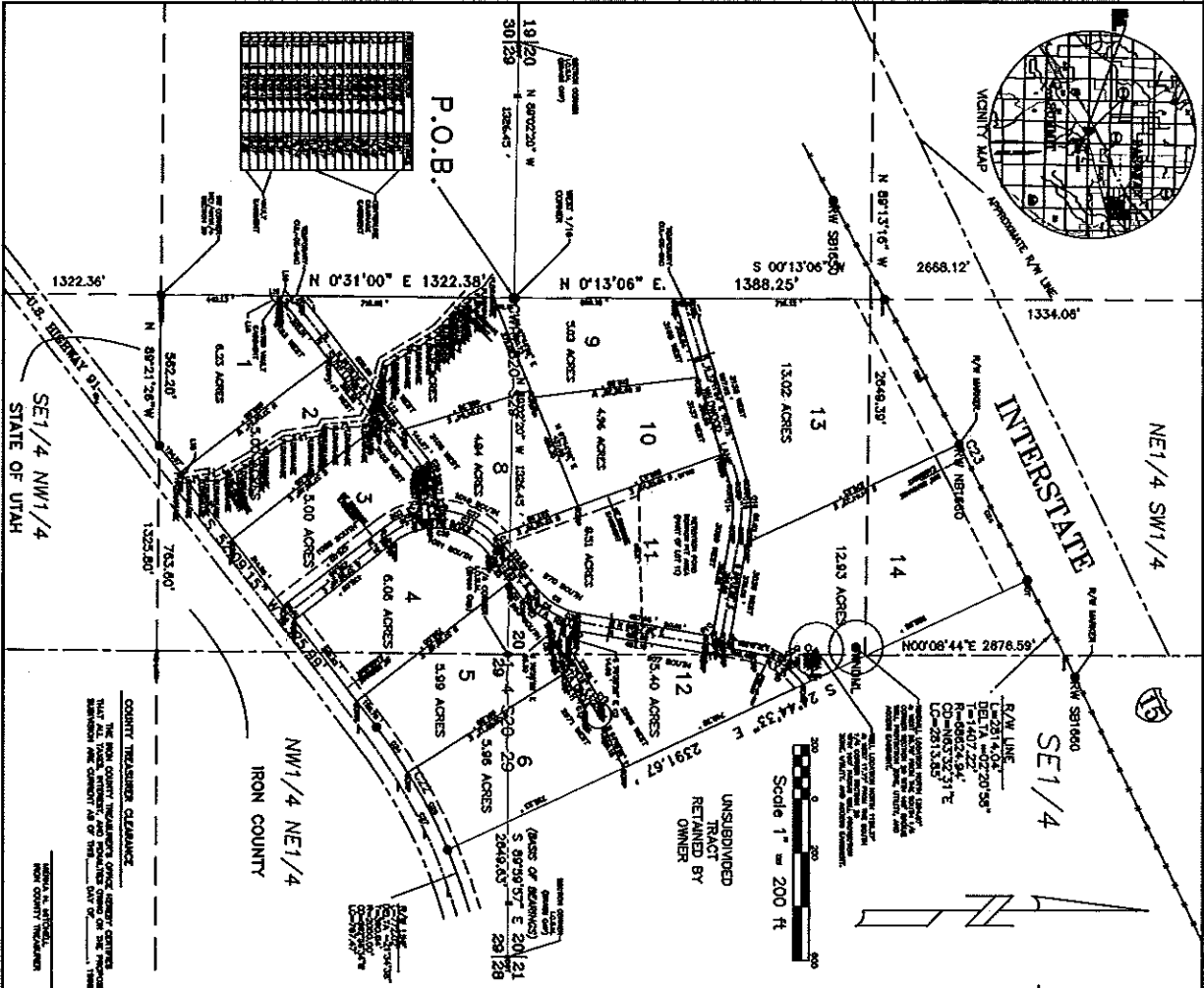
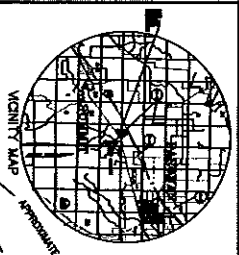
FREE NAVIGATION APP
SELECT: IPHONE ANDROID

Enter your mobile number

[Input field for mobile number]



©2014 MapQuest, Inc. Use of directions and maps is subject to the MapQuest Terms of Use. We make no guarantee of the accuracy of their content, road conditions or route usability. You assume all risk of use. [View Terms of Use](#)



T. 34 S., R. 9 W., S.L.B. & M.

STATEMENT OF CERTIFICATE

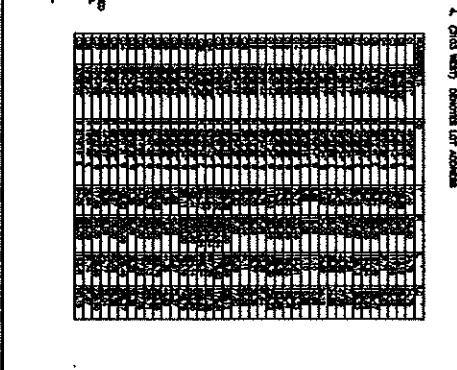
I, JERRY H. HANSEN, COUNTY CLERK, do hereby certify that I am a member and that I have examined the plat of the subdivision and find that the same is in accordance with the laws of this state and that the same is correct and that the same is a true and correct copy of the original as filed in my office and that the same is a true and correct copy of the original as filed in my office and that the same is a true and correct copy of the original as filed in my office.

OWNER'S CERTIFICATE OF DEED

I, JERRY H. HANSEN, COUNTY CLERK, do hereby certify that I am a member and that I have examined the plat of the subdivision and find that the same is in accordance with the laws of this state and that the same is correct and that the same is a true and correct copy of the original as filed in my office and that the same is a true and correct copy of the original as filed in my office and that the same is a true and correct copy of the original as filed in my office.

CERTIFICATE OF RECORDING

I, JERRY H. HANSEN, COUNTY CLERK, do hereby certify that I am a member and that I have examined the plat of the subdivision and find that the same is in accordance with the laws of this state and that the same is correct and that the same is a true and correct copy of the original as filed in my office and that the same is a true and correct copy of the original as filed in my office and that the same is a true and correct copy of the original as filed in my office.



ACKNOWLEDGMENT

I, JERRY H. HANSEN, COUNTY CLERK, do hereby certify that I am a member and that I have examined the plat of the subdivision and find that the same is in accordance with the laws of this state and that the same is correct and that the same is a true and correct copy of the original as filed in my office and that the same is a true and correct copy of the original as filed in my office and that the same is a true and correct copy of the original as filed in my office.

COUNTY ENGINEER'S APPROVAL

I, JERRY H. HANSEN, COUNTY CLERK, do hereby certify that I am a member and that I have examined the plat of the subdivision and find that the same is in accordance with the laws of this state and that the same is correct and that the same is a true and correct copy of the original as filed in my office and that the same is a true and correct copy of the original as filed in my office and that the same is a true and correct copy of the original as filed in my office.

COUNTY ATTORNEY'S APPROVAL

I, JERRY H. HANSEN, COUNTY CLERK, do hereby certify that I am a member and that I have examined the plat of the subdivision and find that the same is in accordance with the laws of this state and that the same is correct and that the same is a true and correct copy of the original as filed in my office and that the same is a true and correct copy of the original as filed in my office and that the same is a true and correct copy of the original as filed in my office.

PLANNING COMMISSION APPROVAL

I, JERRY H. HANSEN, COUNTY CLERK, do hereby certify that I am a member and that I have examined the plat of the subdivision and find that the same is in accordance with the laws of this state and that the same is correct and that the same is a true and correct copy of the original as filed in my office and that the same is a true and correct copy of the original as filed in my office and that the same is a true and correct copy of the original as filed in my office.

CERTIFICATE OF ACCEPTANCE

I, JERRY H. HANSEN, COUNTY CLERK, do hereby certify that I am a member and that I have examined the plat of the subdivision and find that the same is in accordance with the laws of this state and that the same is correct and that the same is a true and correct copy of the original as filed in my office and that the same is a true and correct copy of the original as filed in my office and that the same is a true and correct copy of the original as filed in my office.

RED CANYON ESTATES SUBDIVISION
 WITHIN SECTIONS 20 & 29, T. 34 S., R. 9 W., S.L.B. & M.
 IRON COUNTY, UTAH

BY: PIATT AND PIATT, INC.
 CONSULTING ENGINEERS & SURVEYORS
 P. O. BOX 395 CEDAR CITY, UTAH 84221-0395
 PHONE 801-588-6151

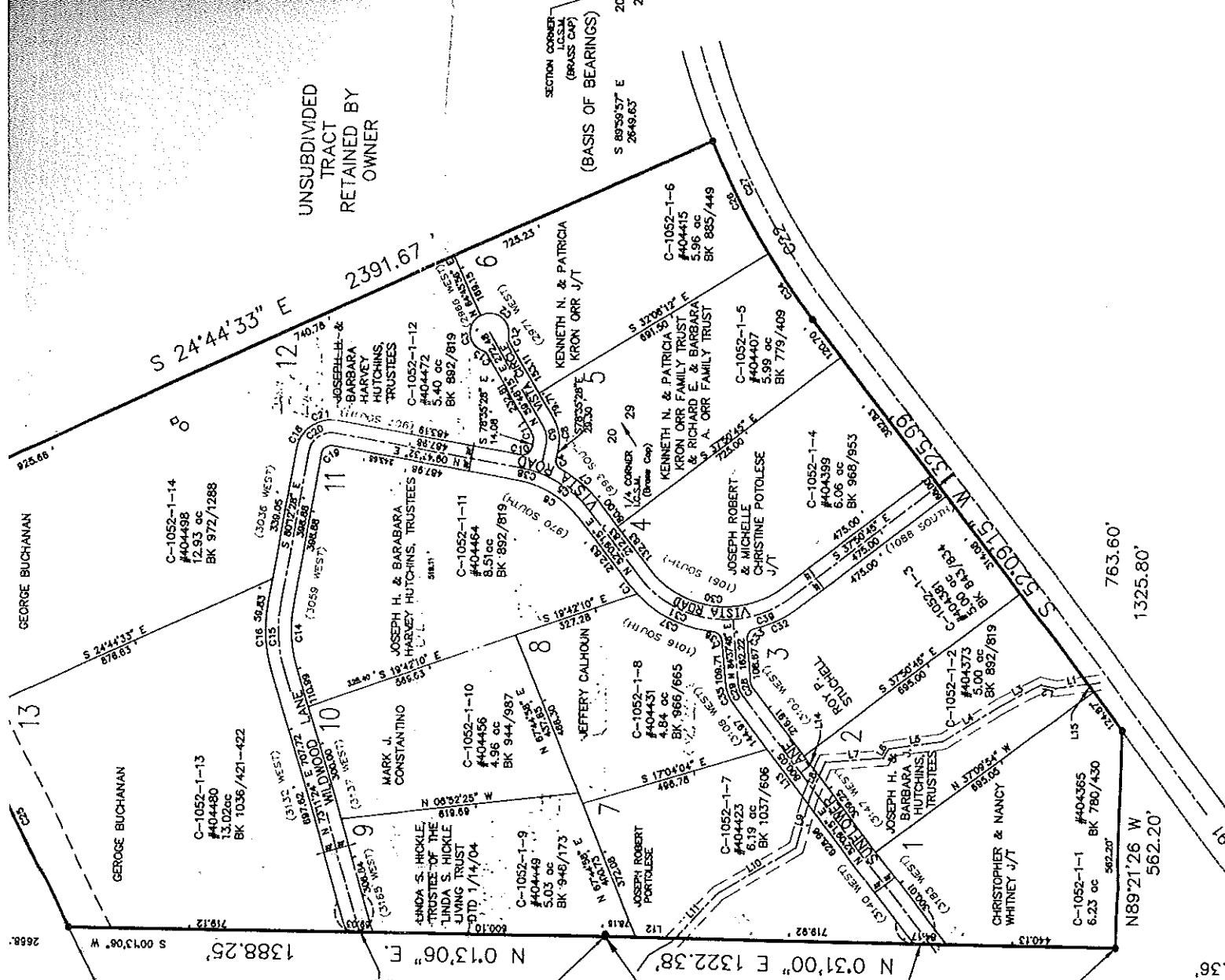
DATE: NOV. 1988
 SCALE: 1" = 200 FT.
 SHEET: 1 OF 1

VICINITY MAP

ZONING IS R-5, REQUIRED FRONT SETBACK = 60 FEET.
 SEWERS ARE 10 FEET WIDE ALONG ALL FRONT LOT LINES.
 FEET ALONG ALL REAR LOT LINES, UNLESS SHOWN OTHERWISE.
 CURB CORNERS SHALL BE MARKED WITH A 5/8" DIAMETER BY
 WITH YELLOW PLASTIC CAP STAMPED PLATTI & PLATTI, INC., L.S. 184689.
 DENOTES LOT ADDRESS

D	T	R	L	LC
1	77.40	516.00	54.75	54.75
2	106.50	50.00	115.19	90.82
3	121.00	50.00	117.90	92.42
4	18.39	263.00	31.71	28.82
5	86.84	263.00	157.40	155.47
6	85.87	250.00	184.84	181.06
7	65.46	316.00	128.13	128.22
8	31.78	303.00	72.81	71.03
9	22.49	37.00	46.85	47.59
10	50.36	303.00	38.56	34.85
11	51.90	303.00	11.10	10.85
12	58.26	15.00	10.85	10.85
13	78.72	333.00	184.61	153.23
14	86.29	205.00	168.63	168.41
15	84.53	369.00	185.29	183.60
16	119.53	283.00	226.20	220.22
17	32.76	91.00	62.89	61.64
18	25.00	25.00	59.27	56.36
19	55.00	56.00	42.83	41.11
20	80.06	91.11	82.02	77.50
21	206.28	2050.00	529.80	508.12
22	597.62	6882.84	1175.82	1173.28
23	263.64	6882.84	567.28	567.28
24	504.27	6882.84	600.54	608.53
25	182.41	2000.00	324.14	323.80
26	261.11	2000.00	733.19	748.75
27	111.85	40.00	22.67	22.37
28	21.26	73.00	41.38	40.83
29	250.00	250.00	392.70	353.35
30	133.39	283.00	281.13	289.71
31	64.85	316.00	127.92	127.65
32	21.25	25.00	35.22	32.38
33	102.82	2090.00	203.46	203.37
34	30.87	108.00	60.08	59.28
35	20.86	25.00	54.77	52.04
36	117.88	316.00	225.66	220.80
37	15.01	49" E	23.84	23.80
38	21.815" E	283.00	51.74	51.87
39	84.05	283.00	183.41	181.15

NUMBER	DIRECTION	DISTANCE
L1	N 08°30'52" W	84.61
L2	N 12°10'03" E	37.90
L3	N 28°27'58" W	117.04
L4	N 32°20'02" W	174.48
L5	N 08°28'32" W	139.85
L6	N 60°52'21" W	27.69
L7	N 04°45'14" W	150.87
L8	N 67°16'03" W	90.58
L9	N 75°21'56" W	132.01
L10	N 31°15'48" W	234.57
L11	N 47°08'28" W	161.51
L12	N 00°31'00" E	102.87
L13	N 52°09'13" E	176.74
L14	N 52°09'13" E	64.87
L15	N 52°09'13" E	25.37
L16	N 52°09'13" E	32.29
L17	S 37°50'43" E	25.00
L18	S 52°09'13" W	52.07
L19	N 00°31'00" E	51.88



UNSUBDIVIDED TRACT RETAINED BY OWNER

SECTION CORNER (LOCAL BRASS CAP) (BASIS OF BEARINGS)
 S 89°59'57" E
 2648.63'

WEST 1/16 CORNER
 N 89°02'20" W
 1326.45'

CENTURINE DRAINAGE EASEMENT

TEMPORARY CUL-DE-SAC

VAULT EASEMENT

SW CORNER NEY/ANNI/4 SECTION 29