

Meter info- We have 189 meters

Most are 3/4" -1" - 35 of them are 1 1/2" or larger.

We would like to be on a 10-15 year replacement cycle depending on water use for each unit.

163 of the meters are over 10yrs old most of which are over 30 years old – we need to replace asap

Mains.

We have approximately 19,000 lineal feet of 8" main lines and 1,000 lineal feet of 2" main line – we are unsure how much of each line is galvanized or PVC

There is an additional 5,000 lineal feet of lines within each individual condominium property which are the responsibility of each individual condominium HOA

5,000 lineal feet of the 8" main is fairly new and replaced within the last 5-10 yrs

The rest was installed in the late 70's and 80's.

LEGEND

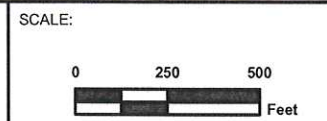
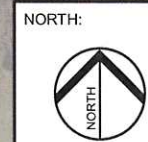
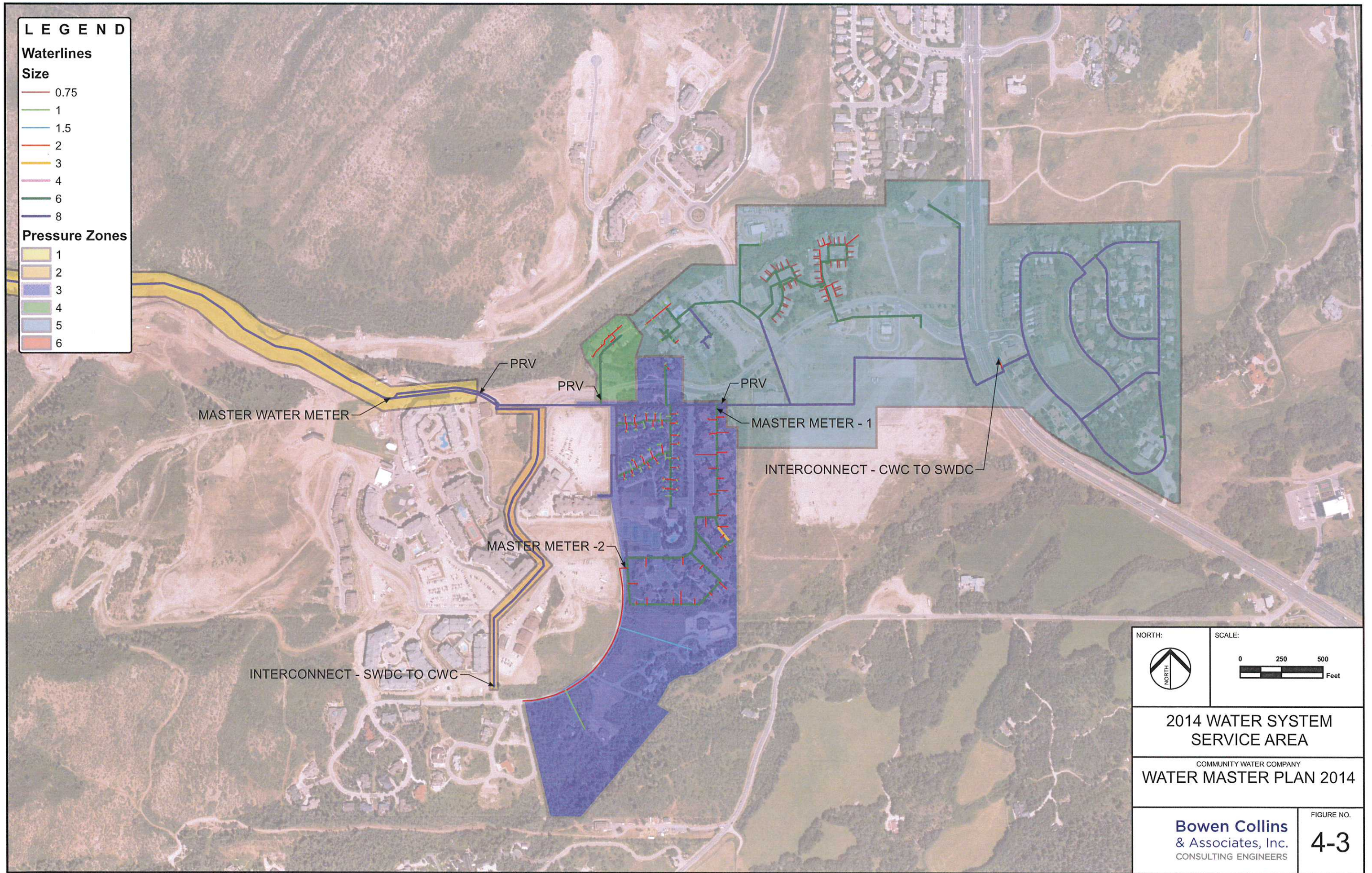
Waterlines

Size

- 0.75
- 1
- 1.5
- 2
- 3
- 4
- 6
- 8

Pressure Zones

- 1
- 2
- 3
- 4
- 5
- 6



2014 WATER SYSTEM SERVICE AREA

COMMUNITY WATER COMPANY
WATER MASTER PLAN 2014

Bowen Collins & Associates, Inc.
CONSULTING ENGINEERS

FIGURE NO.
4-3