

Areas of Proposed Service

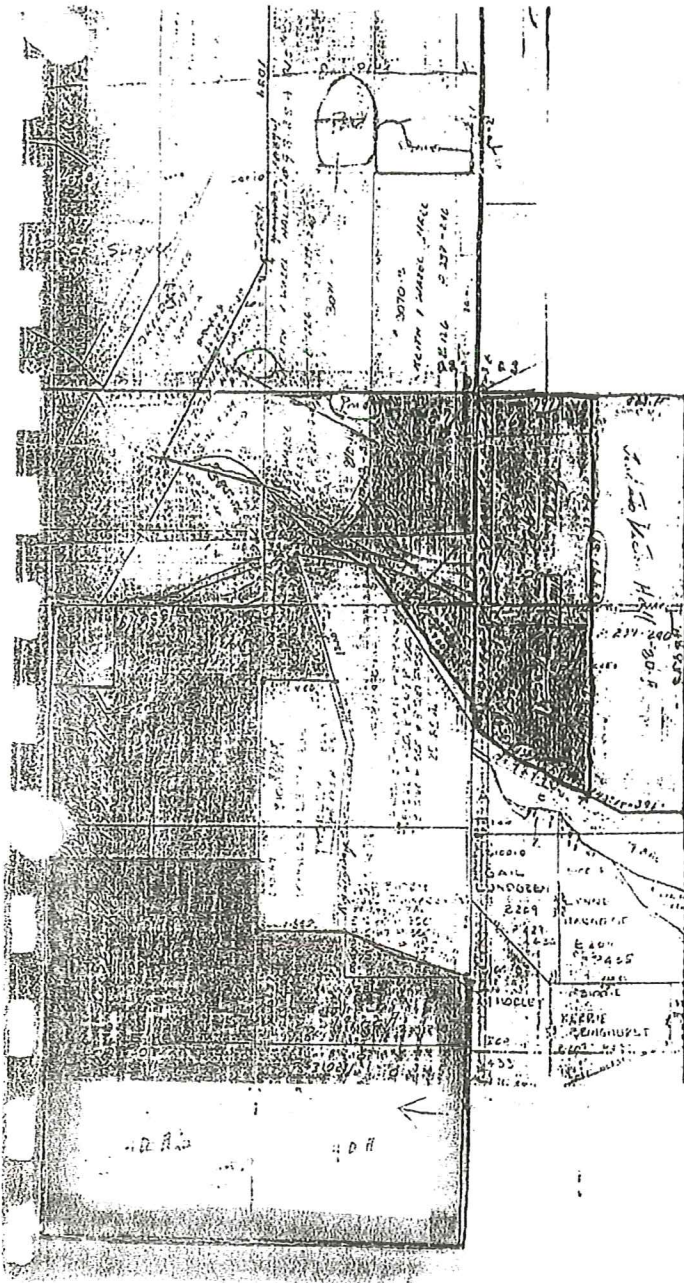
(Legal Description, Map and Drawings of "Harmony Heights Subdivision")

Legal Description of Proposed Service

Beginning at the Southeast Corner of Section 22, Township 38 South Range 3 West, Salt Lake Base and Meridian, and running thence North along the Section Line 1320 feet; thence N. 89°51'30" W. 215 feet; thence North 1038.47 feet; thence West 1140.39 feet to 1/16 line; thence S. 0°20' E. along the 1/16 line 1593.38 feet to the North Corner of Lot 1 of William Pace Survey; thence S. 26°13'49" W. along the Lot Line 1051 feet; thence S. 53°46'11" E. along the Lot Line 585.56 feet to the Southeast Corner of said Lot 11, and a point on the 1/16 line; thence S. 0°20'11" along the 1/16 line 796.40 feet to the Northeast Corner of the SW1/4NE1 of Section 27, T. 38 S., R. 13 W.; thence N. 89°38'46" W. along the 1/16 line 336.19 feet to the Northwest Corner of said SW1/4NE1/4; thence S. 0°34' E. along the 1/4 Section Line 4022.74 feet to the South 1/4 Corner of Section 27; thence N. 89°56'14" E. along the Section Line 2641.96 feet to Southeast Corner of said Section 27; thence N. 0°09'28" W. along Section Line 1764.82 feet; thence N. 73°22'57" W. 601.93 feet; thence S. 62°31'08" W. 52.50 feet; thence S. 89°50'32" W. 528.42 feet to a point on West Line of the NE1/4SE1/4 of Section 27; thence N. 0°21'55" W. along said line 632.67 feet to the SW Cor. SE1/4NE1/4 of Sec. 27; thence S. 0°20'11" W. along the 1/16 line 877.08 feet; thence S. 89°36'38" E. 529.52 feet; thence N. 23°33'38" W. 831.50 feet; thence S. 81°57'27" E. 502.40 feet; thence S. 46°50'10" E. 67.42 feet; thence S. 70°47'49" E. 61.88 feet; thence S. 23°52' E. 318.16 feet; thence S. 41°32'38" E. 388.50 feet to a point on the Section Line; thence S. 0°06'08" E. along the Section Line 111.89 feet; thence S. 48°45' E. 235.94 feet; thence S. 64°00' E. 432.00 feet; thence S. 62°30' E. 256 feet; thence North 2441.89 feet to the Section Line; thence West along Section Line 797.00 feet to the point of beginning.

Containing 342 acres more or less.

RECEIVED
DIVISION OF
PUBLIC UTILITIES
MAR 30 A 7:13



SUBDIVISION--"HARMONY HEIGHTS"
 PROPOSED AREAS FOR SURPLUS WATER USE
 ADJOINING PROPERTY OWNERS
 NATIONAL FOREST PROPERTY

