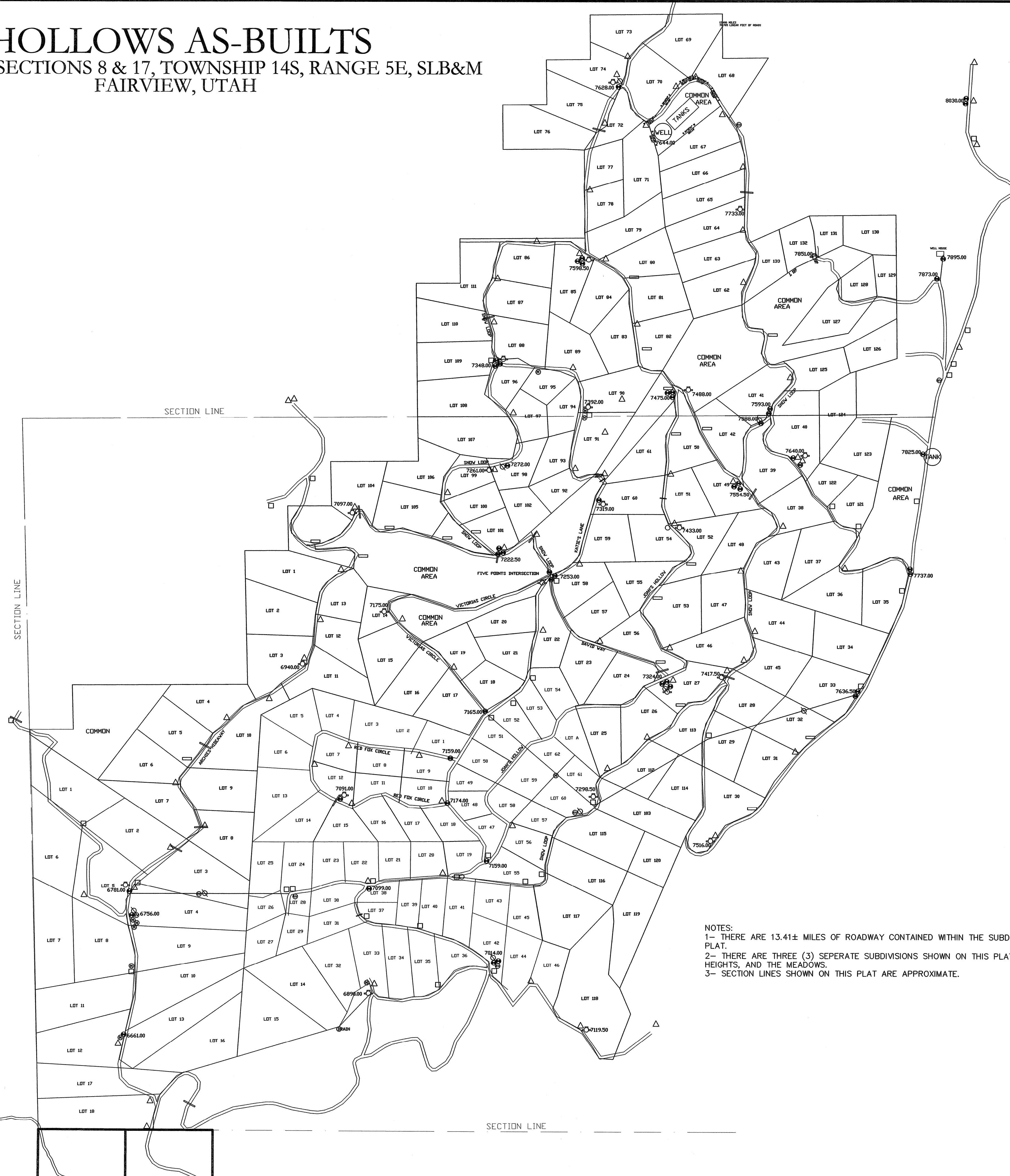
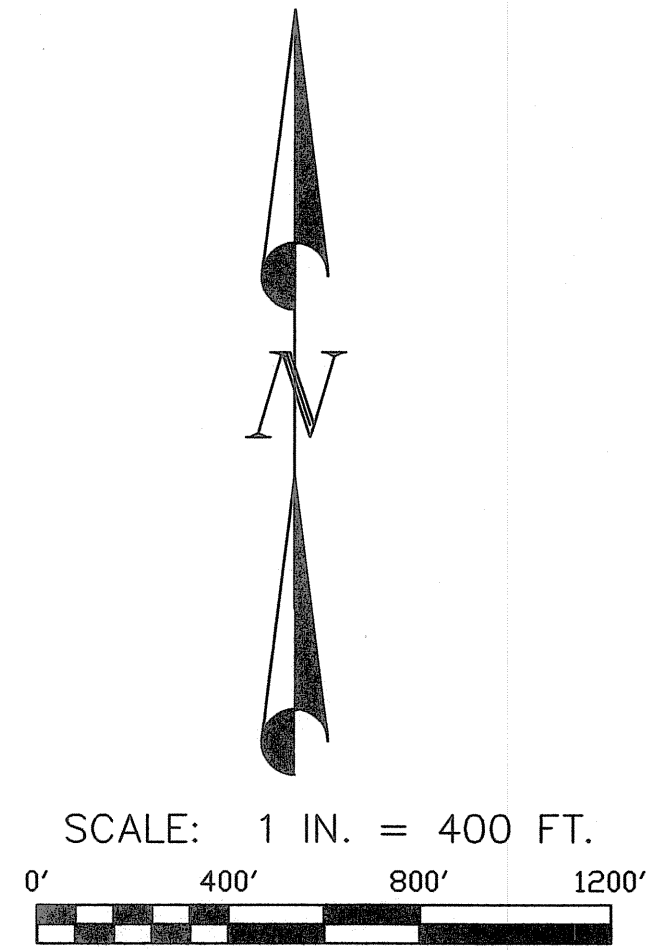


# HOLLOWS AS-BUILTS

LOCATED IN SECTIONS 8 & 17, TOWNSHIP 14S, RANGE 5E, SLB&M  
FAIRVIEW, UTAH



## LEGEND

- SECTIONALIZER
- 3 PHASE
- TRANSFORMER
- FIRE HYDRANT
- PRV VALVE
- WATER VALVE
- WATER METER
- CULVERT
- AIR VAC

NOTES:  
 1- THERE ARE 13.41± MILES OF ROADWAY CONTAINED WITHIN THE SUBDIVISIONS OF THIS AS-BUILT PLAT.  
 2- THERE ARE THREE (3) SEPERATE SUBDIVISIONS SHOWN ON THIS PLAT. THE HOLLOWS, SKYLINE HEIGHTS, AND THE MEADOWS.  
 3- SECTION LINES SHOWN ON THIS PLAT ARE APPROXIMATE.

**OAK HILLS SURVEYING ASSOCIATES, L.C.**  
 238 EAST STATE ST SUITE 8  
 PLEASANT GROVE, UT 84062  
 (801) 796-3828 (Phone)  
 (801) 785-3733 (Fax)  
 oakhillssurvey@aol.com

## HOLLOWS AS-BUILTS

REQUESTED BY:  
**JOHN MAUGHAN**

<b>DRAWN</b> KSB	<b>DATE</b> 10/15/07	<b>SECTIONS 8 &amp; 17</b> T.14S., R.5E., SLB&M
<b>APPROVED</b> FDE	<b>DATE</b>	<b>FAIRVIEW, UTAH</b>
<b>SCALE</b> 1" = 400'	<b>SHEET</b> 1	<b>PROJECT NO.</b> 07-324

SURVEYOR'S SEAL